



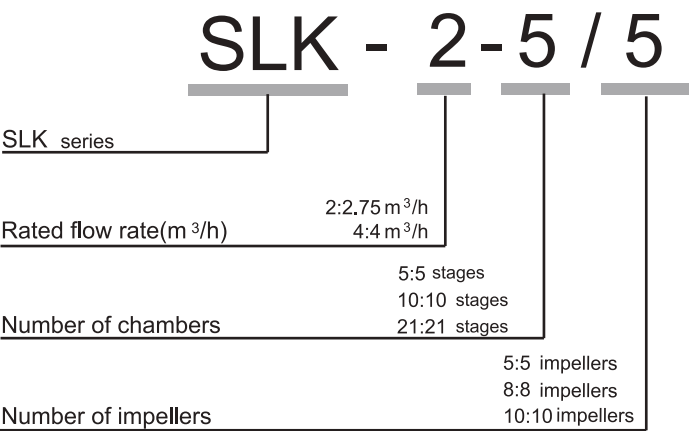
SLK 2,4 series
Immersible pump

50/60Hz



2	SLK	General Data
4	SLK	Material
5	SLK	Performance Range 50Hz
6	SLK	2 series 50Hz(Dual Frequency) Technical data
9	SLK	4 series 50Hz(Dual Frequency) Technical data
12	SLK	Performance Range 60Hz
13	SLK	2 series 60Hz(Dual Frequency) Technical data
16	SLK	4 series 60Hz(Dual Frequency) Technical data
18	SLK	Installation

Type Keys



General Data

SLK

Feature

Compact design / High Efficiency Reliability /
Easy installation / Wide Range

Application

Cooling units / Grinding machines /
Machine centers / Filtering systems /
Industrial washing machines



SLK pumps are vertical multistage centrifugal pumps especially designed for pumping of cooling lubricants for machine tools.

STAIRS SLK pumps are available with various pump sizes and various numbers of stages to provide the flow, the pressure and the length required.

SLK 50Hz Product Data

Range	2	4
Frequency	50Hz	50Hz
Rated flow rate(m ³ /h)	2.25	3
Flow range (m ³ /h)	0.5-2.5	2.0-5.0
Maximum head (bar)	10.7	9.2
Motor power (kW)	0.37-1.1	0.37-1.1
Temperature range (°C)	-10 to +90	

Pipe connection

Union RP 3/4

SLK 60Hz Product Data

Range	2	4
Frequency	60Hz	60Hz
Rated flow rate(m ³ /h)	2.75	4
Flow range (m ³ /h)	0.6-3.0	2.0-6.0
Maximum head (bar)	10	7.1
Motor power (kW)	0.37-1.1	0.37-1.1
Temperature range (°C)	-10 to +90	

Pipe connection

Union RP 3/4

General Data

SLK

Pumped Liquids

Do not pump the explosive or aggressive liquids and the liquids should be free of fibers. The SLK pumps have the strainer in the suction chamber with inlet to prevent large particles from entering and damaging the pump.

List of materials

U: Tungsten carbide V: Viton

Type of Seal

HUUV

Standard

Mechanical seal is available in different material per customer's demand.

Mechanical Seals

Standard Cartridge type mechanical seal made of Tungsten carbide/Tungsten carbide Viton.

The cartridge type mechanical seal can be replaced in minutes without special tools and without dismantling the pump.

Motor Data

SLK is fitted with totally enclosed fan-cooled, 2-pole standard motor.

Enclosure class : IP 55

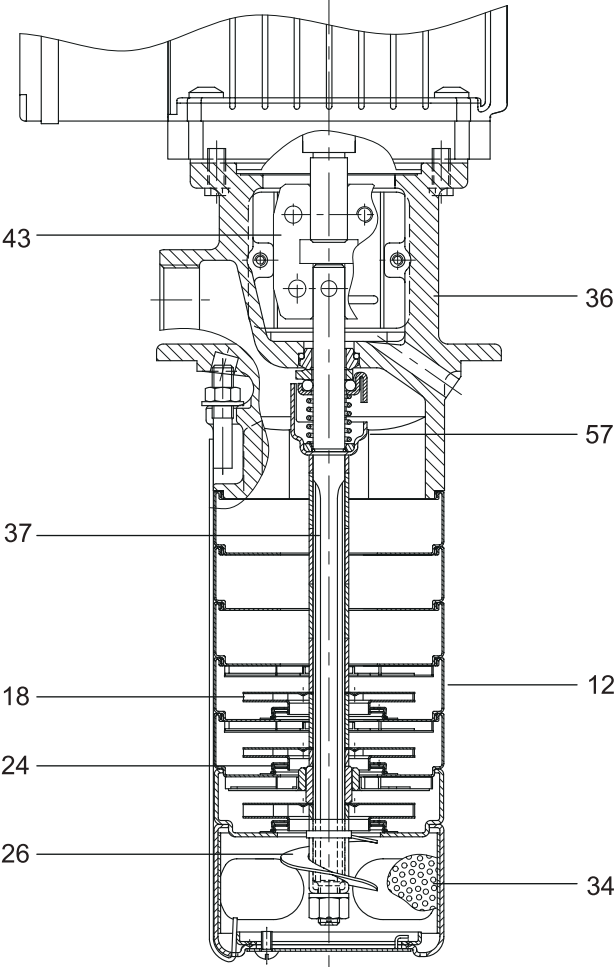
Insulation class : F

Ambient temperature : Max. + 50°C

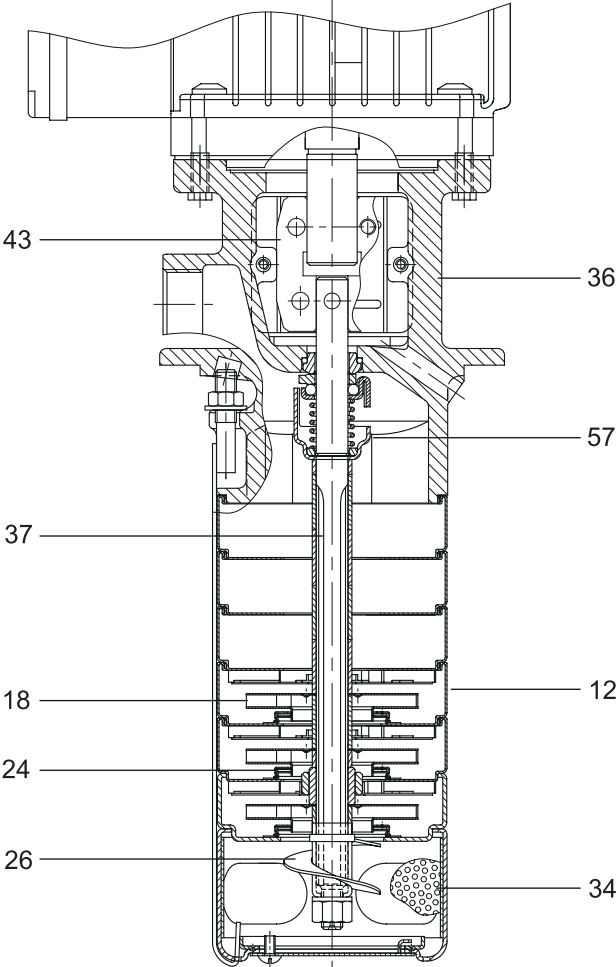
Supply voltage 50 Hz: 3X220-240/380-415V

Supply voltage 60 Hz: 3X220-255/380-440V

SLK-2

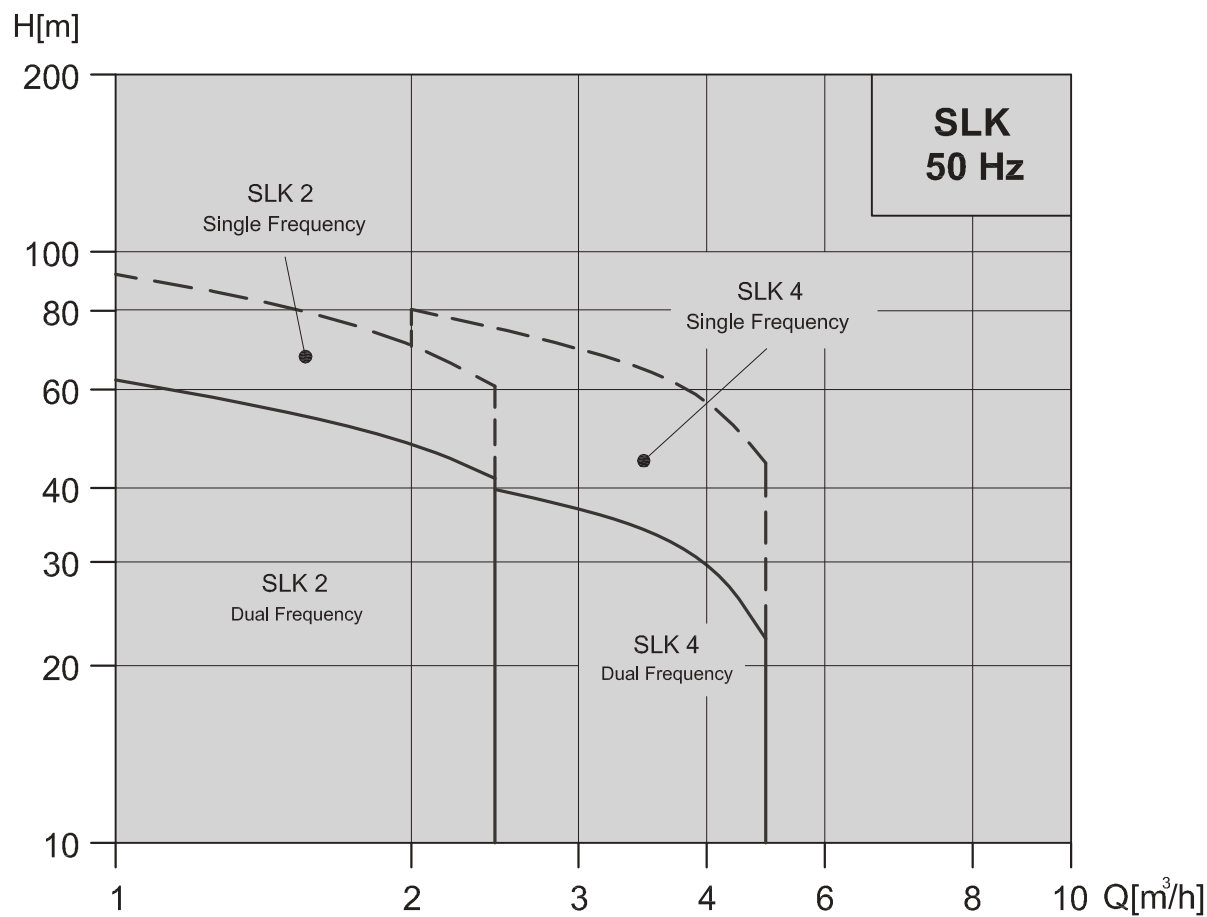


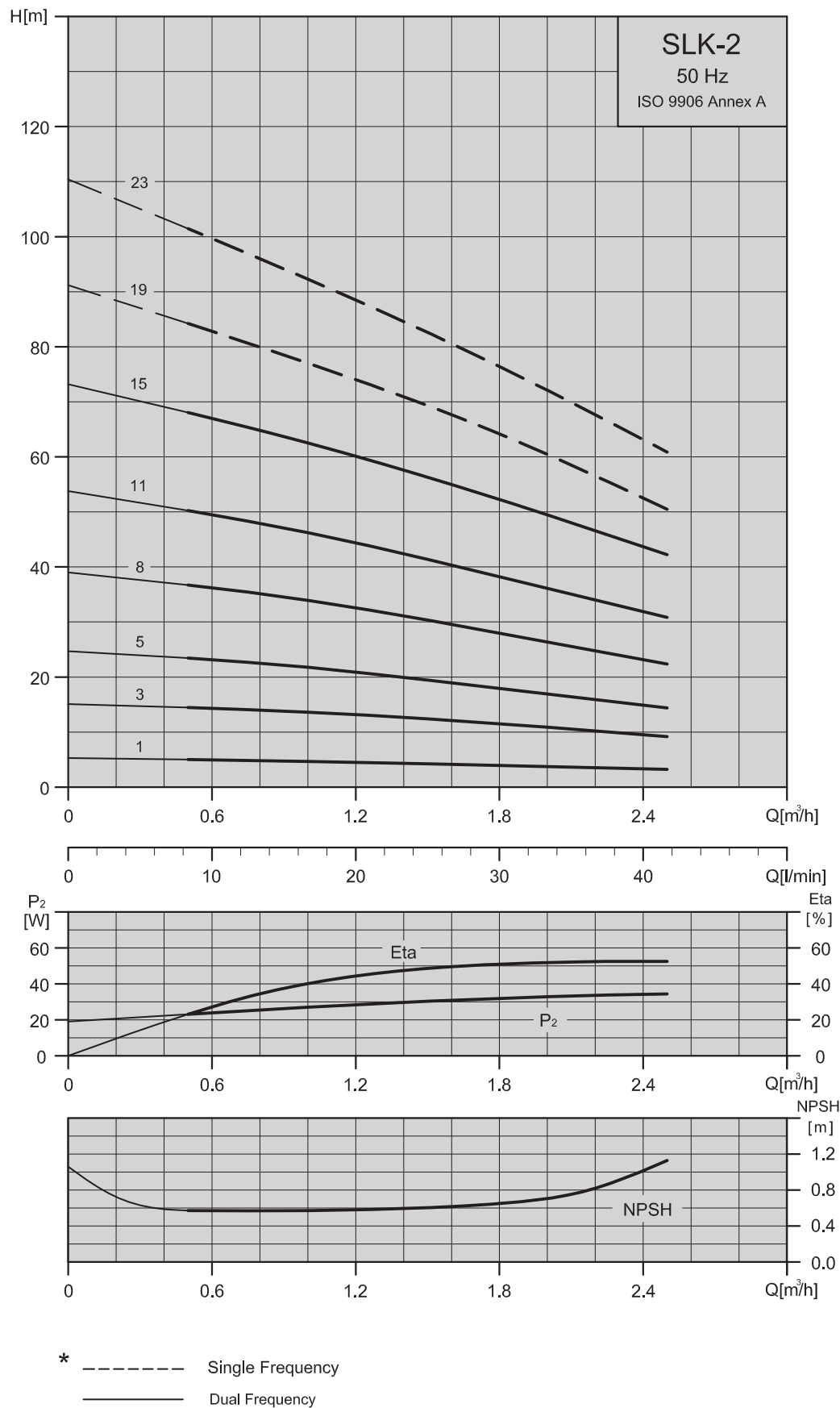
SLK-4



Pos.	Name	Material	Europe	AISI/ASTM
12	Chamber complete	Stainless steel	1.4301	AISI 304
18	Impeller	Stainless steel	1.4301	AISI 304
24	Neck ring	PTFE		
26	Priming screw	Stainless steel	1.4301	AISI 304
34	Strainer	Stainless steel	1.4301	AISI 304
36	Pump head	Cast Iron EN-GJL-220	0.6020	ASTM 25B
37	Pump shaft	Stainless steel	1.4057	AISI 431
43	Coupling			
57	Shaft seal	HUUV/HUUE		

Performance Range SLK 2,4

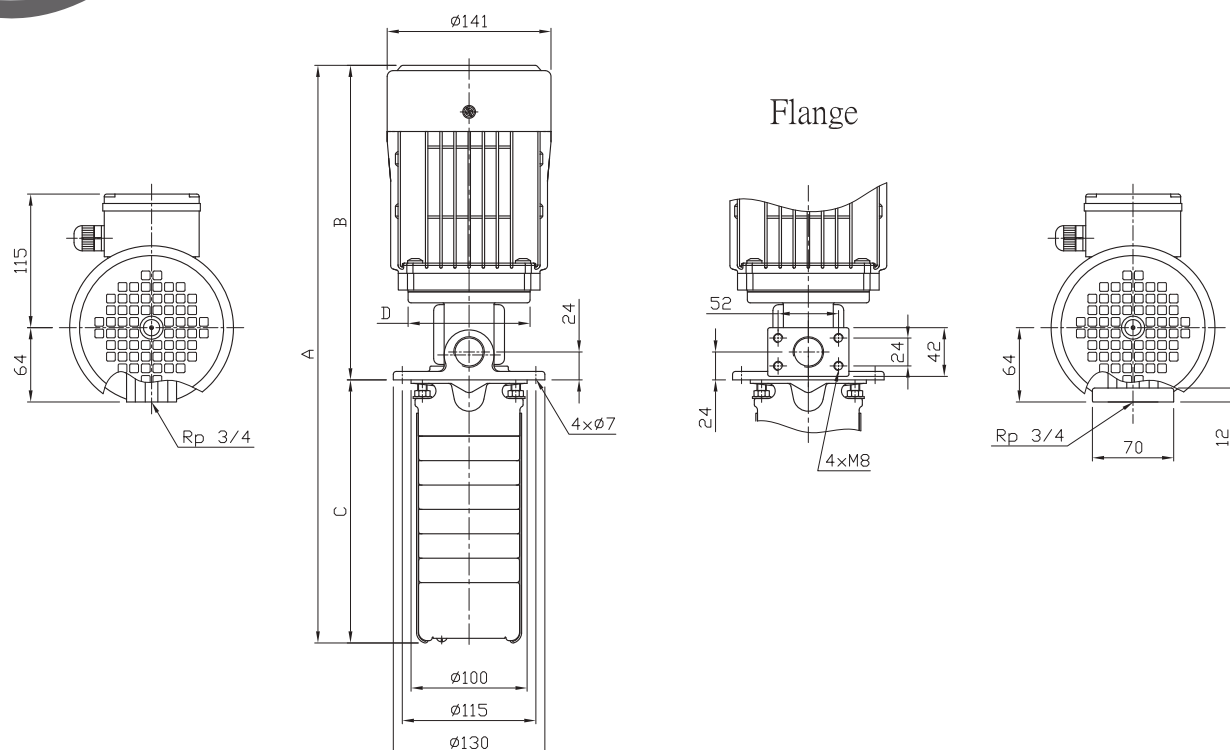




Technical data

Dimensions and weights SLK 2

50Hz



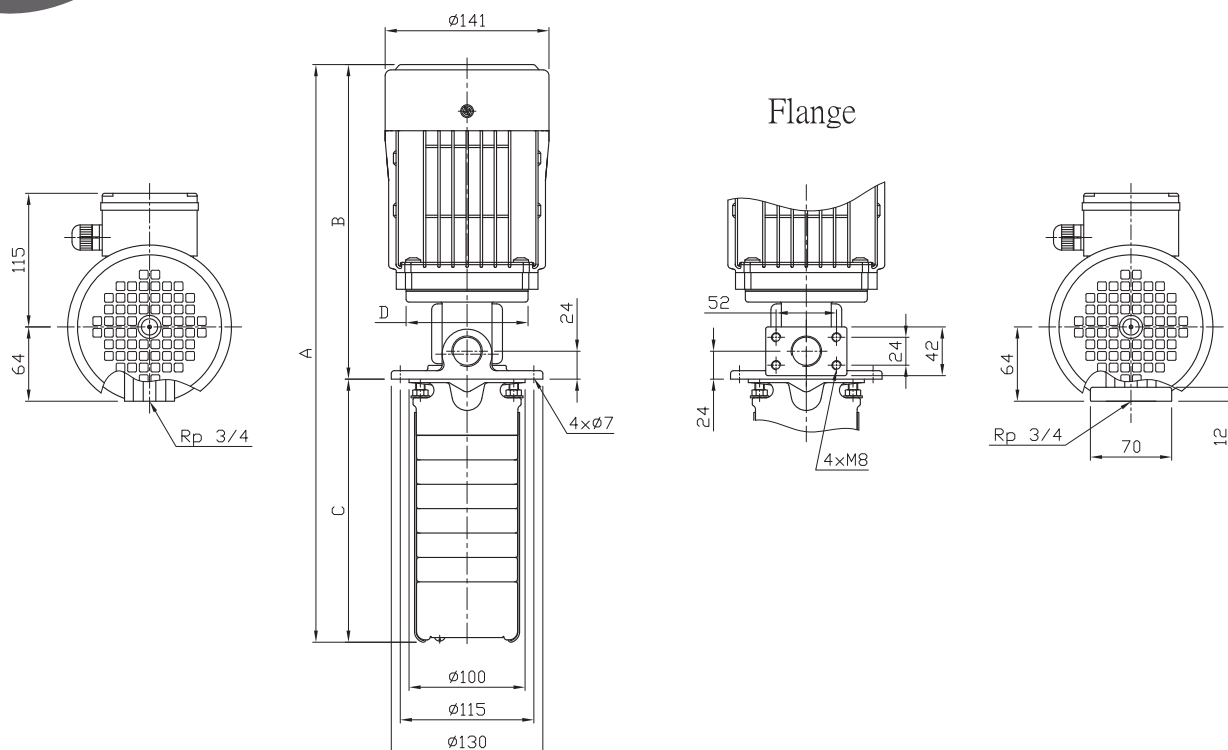
Dual Frequency

Pump Type	Motor P ₂		In [A]	Dimension (mm)				Net Weight [kg]
	[kW]	HP		A	B	C	D	
SLK-2-1/1	0.37	0.5	1.8-1.9 / 1.0-1.1	413	270	143	105	9.4
SLK-2-3/1	0.37	0.5	1.8-1.9 / 1.0-1.1	455	270	185	105	9.6
SLK-2-3/3	0.37	0.5	1.8-1.9 / 1.0-1.1	455	270	185	105	9.8
SLK-2-5/1	0.37	0.5	1.8-1.9 / 1.0-1.1	497	270	227	105	9.9
SLK-2-5/3	0.37	0.5	1.8-1.9 / 1.0-1.1	497	270	227	105	10.1
SLK-2-5/5	0.37	0.5	1.8-1.9 / 1.0-1.1	497	270	227	105	10.2
SLK-2-8/1	0.37	0.5	1.8-1.9 / 1.0-1.1	560	270	290	105	10.2
SLK-2-8/3	0.37	0.5	1.8-1.9 / 1.0-1.1	560	270	290	105	10.4
SLK-2-8/5	0.37	0.5	1.8-1.9 / 1.0-1.1	560	270	290	105	10.6
SLK-2-8/8	0.55	0.75	2.6-2.7 / 1.5-1.6	560	270	290	105	11.3
SLK-2-11/1	0.37	0.5	1.8-1.9 / 1.0-1.1	623	270	353	105	10.5
SLK-2-11/3	0.37	0.5	1.8-1.9 / 1.0-1.1	623	270	353	105	10.7
SLK-2-11/5	0.37	0.5	1.8-1.9 / 1.0-1.1	623	270	353	105	10.8
SLK-2-11/8	0.55	0.75	2.6-2.7 / 1.5-1.6	623	270	353	105	11.6
SLK-2-11/11	0.75	1	3.4-3.6 / 2.0-2.1	666	313	353	120	13.8
SLK-2-15/1	0.37	0.5	1.8-1.9 / 1.0-1.1	707	270	437	105	10.9
SLK-2-15/3	0.37	0.5	1.8-1.9 / 1.0-1.1	707	270	437	105	11.1
SLK-2-15/5	0.37	0.5	1.8-1.9 / 1.0-1.1	707	270	437	105	11.3
SLK-2-15/8	0.55	0.75	2.6-2.7 / 1.5-1.6	707	270	437	105	12.1
SLK-2-15/11	0.75	1	3.4-3.6 / 2.0-2.1	750	313	437	120	14.2
SLK-2-15/15	1.1	1.5	5.1-5.2 / 2.9-3.0	750	313	437	120	15.7

Technical data

Dimensions and weights SLK 2

50Hz

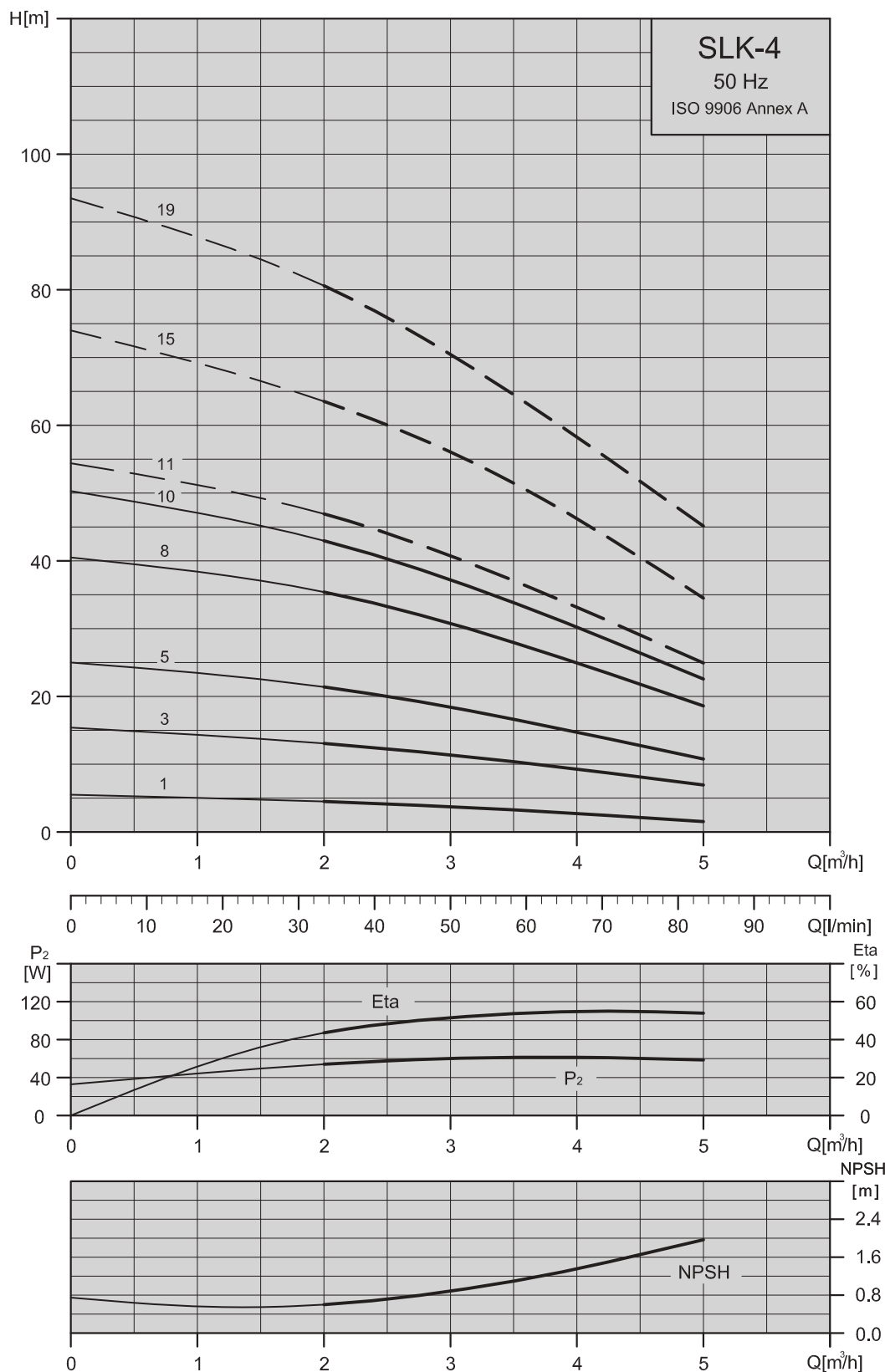


Dual Frequency

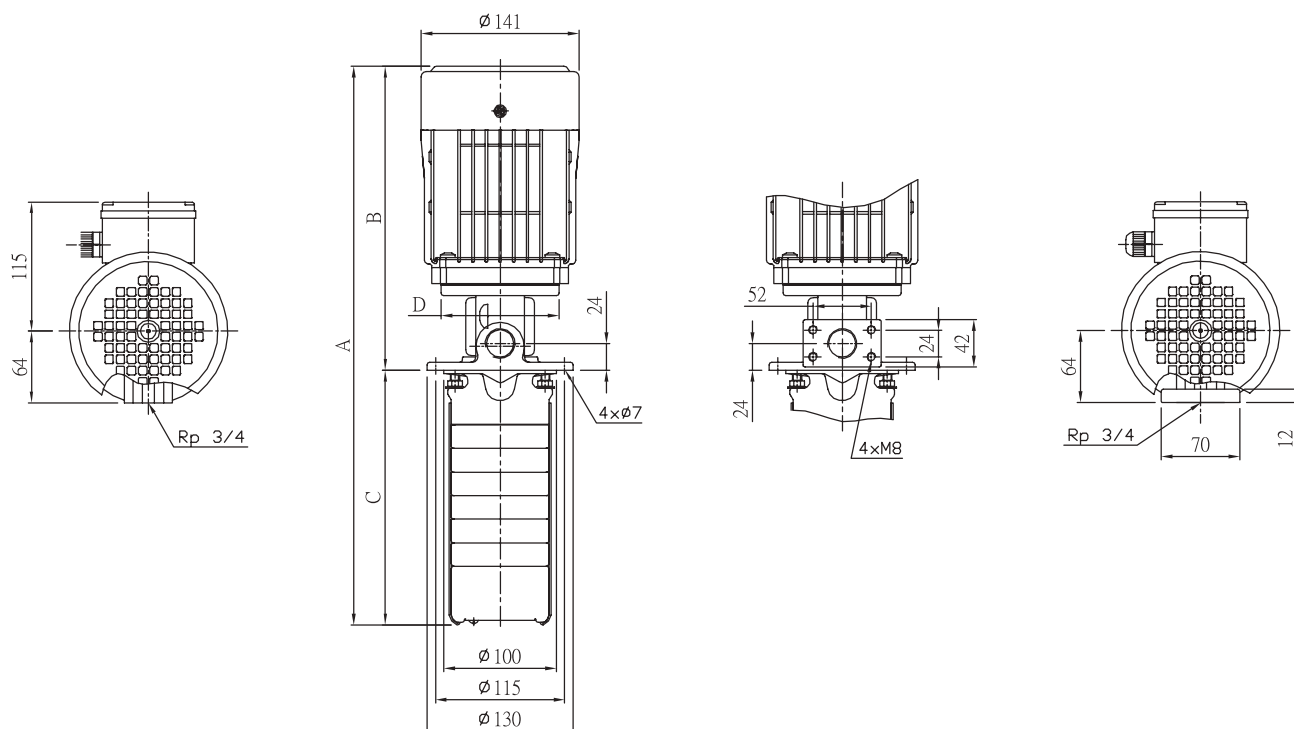
Pump Type	Motor P ₂		In [A]	Dimension (mm)				Net Weight [kg]
	[kW]	HP		A	B	C	D	
SLK-2-19/1	0.37	0.5	1.8-1.9 / 1.0-1.1	791	270	521	105	11.2
SLK-2-19/3	0.37	0.5	1.8-1.9 / 1.0-1.1	791	270	521	105	11.3
SLK-2-19/5	0.37	0.5	1.8-1.9 / 1.0-1.1	791	270	521	105	11.5
SLK-2-19/8	0.55	0.75	2.6-2.7 / 1.5-1.6	791	270	521	105	12.3
SLK-2-19/11	0.75	1	3.4-3.6 / 2.0-2.1	834	313	521	120	14.4
SLK-2-19/15	1.1	1.5	5.1-5.2 / 2.9-3.0	834	313	521	120	15.9
SLK-2-23/1	0.37	0.5	1.8-1.9 / 1.0-1.1	875	270	605	105	11.9
SLK-2-23/3	0.37	0.5	1.8-1.9 / 1.0-1.1	875	270	605	105	12.1
SLK-2-23/5	0.37	0.5	1.8-1.9 / 1.0-1.1	875	270	605	105	12.3
SLK-2-23/8	0.55	0.75	2.6-2.7 / 1.5-1.6	875	270	605	105	13.1
SLK-2-23/11	0.75	1	3.4-3.6 / 2.0-2.1	918	313	605	120	15.2
SLK-2-23/15	1.1	1.5	5.1-5.2 / 2.9-3.0	918	313	605	120	16.7

Single Frequency

Pump Type	Motor P ₂		In [A]	Dimension (mm)				Net Weight [kg]
	[kW]	HP		A	B	C	D	
SLK-2-19/19	0.75	1	3.4-3.6 / 2.0-2.1	834	313	521	120	15.2
SLK-2-23/19	0.75	1	3.4-3.6 / 2.0-2.1	818	313	605	120	15.6
SLK-2-23/23	0.75	1	3.4-3.6 / 2.0-2.1	918	313	605	120	16



* - - - - Single Frequency
— Dual Frequency



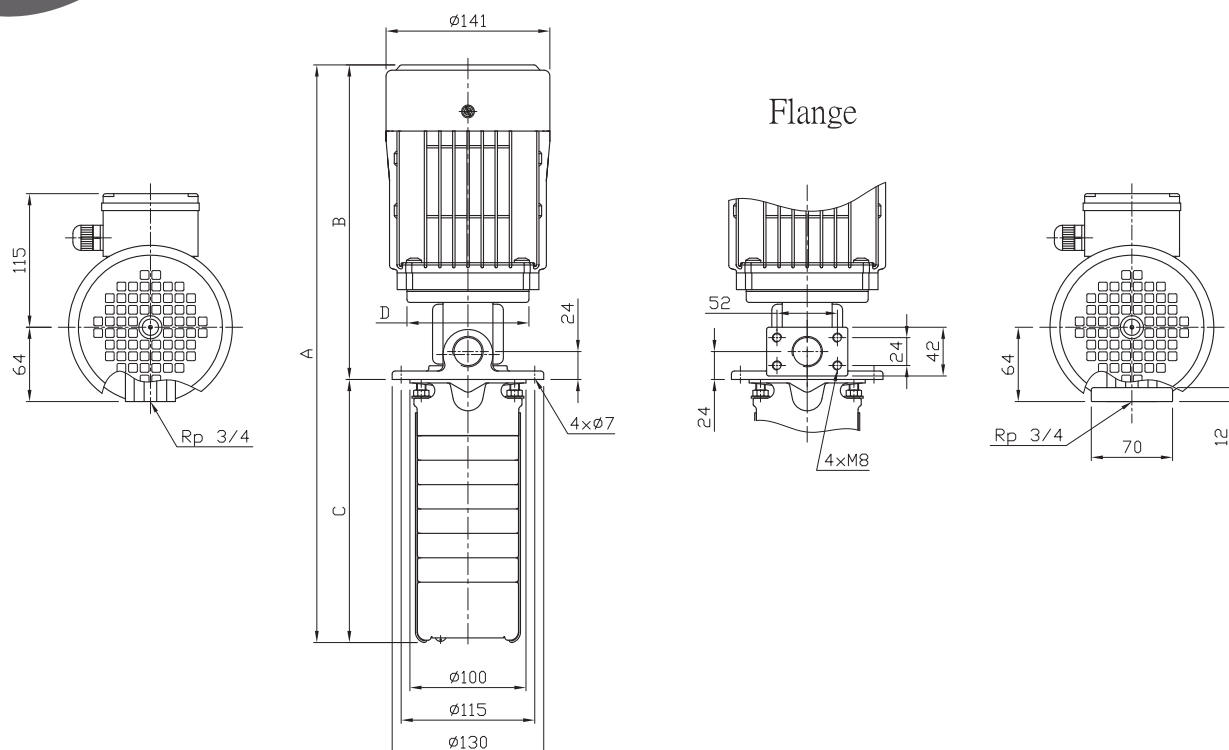
Dual Frequency

Pump Type	Motor P ₂		I _n [A]	Dimension (mm)				Net Weight [kg]
	[kW]	HP		A	B	C	D	
SLK-4-1/1	0.37	0.5	1.8-1.9 / 1.0-1.1	413	270	143	105	9.4
SLK-4-3/1	0.37	0.5	1.8-1.9 / 1.0-1.1	455	270	185	105	9.6
SLK-4-3/3	0.37	0.5	1.8-1.9 / 1.0-1.1	455	270	185	105	9.8
SLK-4-5/1	0.37	0.5	1.8-1.9 / 1.0-1.1	497	270	227	105	9.9
SLK-4-5/3	0.37	0.5	1.8-1.9 / 1.0-1.1	497	270	227	105	10
SLK-4-5/5	0.55	0.75	2.6-2.7 / 1.5-1.6	497	270	227	105	10.7
SLK-4-8/1	0.37	0.5	1.8-1.9 / 1.0-1.1	560	270	290	105	10.1
SLK-4-8/3	0.37	0.5	1.8-1.9 / 1.0-1.1	560	270	290	105	10.3
SLK-4-8/5	0.55	0.75	2.6-2.7 / 1.5-1.6	560	270	290	105	10.9
SLK-4-8/8	1.1	1.5	5.1-5.2 / 2.9-3.0	603	313	290	120	14.2
SLK-4-11/1	0.37	0.5	1.8-1.9 / 1.0-1.1	623	270	353	105	10.4
SLK-4-11/3	0.37	0.5	1.8-1.9 / 1.0-1.1	623	270	353	105	10.6
SLK-4-11/5	0.55	0.75	2.6-2.7 / 1.5-1.6	623	270	353	105	11.3
SLK-4-11/8	1.1	1.5	5.1-5.2 / 2.9-3.0	666	313	353	120	14.5
SLK-4-11/10	1.1	1.5	5.1-5.2 / 2.9-3.0	666	313	353	120	14.7
SLK-4-15/1	0.37	0.5	1.8-1.9 / 1.0-1.1	707	270	437	105	10.9
SLK-4-15/3	0.37	0.5	1.8-1.9 / 1.0-1.1	707	270	437	105	11
SLK-4-15/5	0.55	0.75	2.6-2.7 / 1.5-1.6	707	270	437	105	11.7
SLK-4-15/8	1.1	1.5	5.1-5.2 / 2.9-3.0	750	313	437	120	15
SLK-4-15/10	1.1	1.5	5.1-5.2 / 2.9-3.0	750	313	437	120	15.2

Technical data

Dimensions and weights SLK 4

50Hz



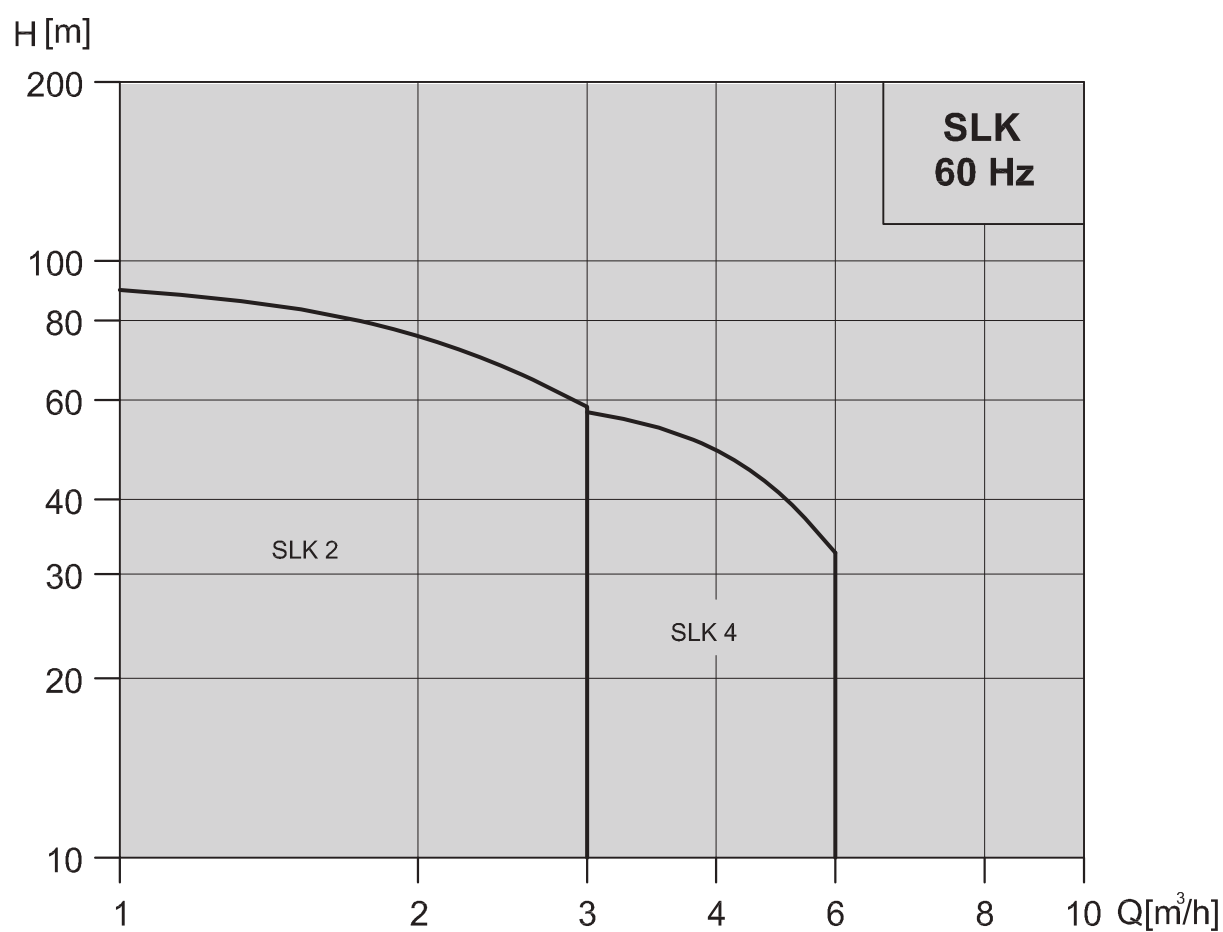
Dual Frequency

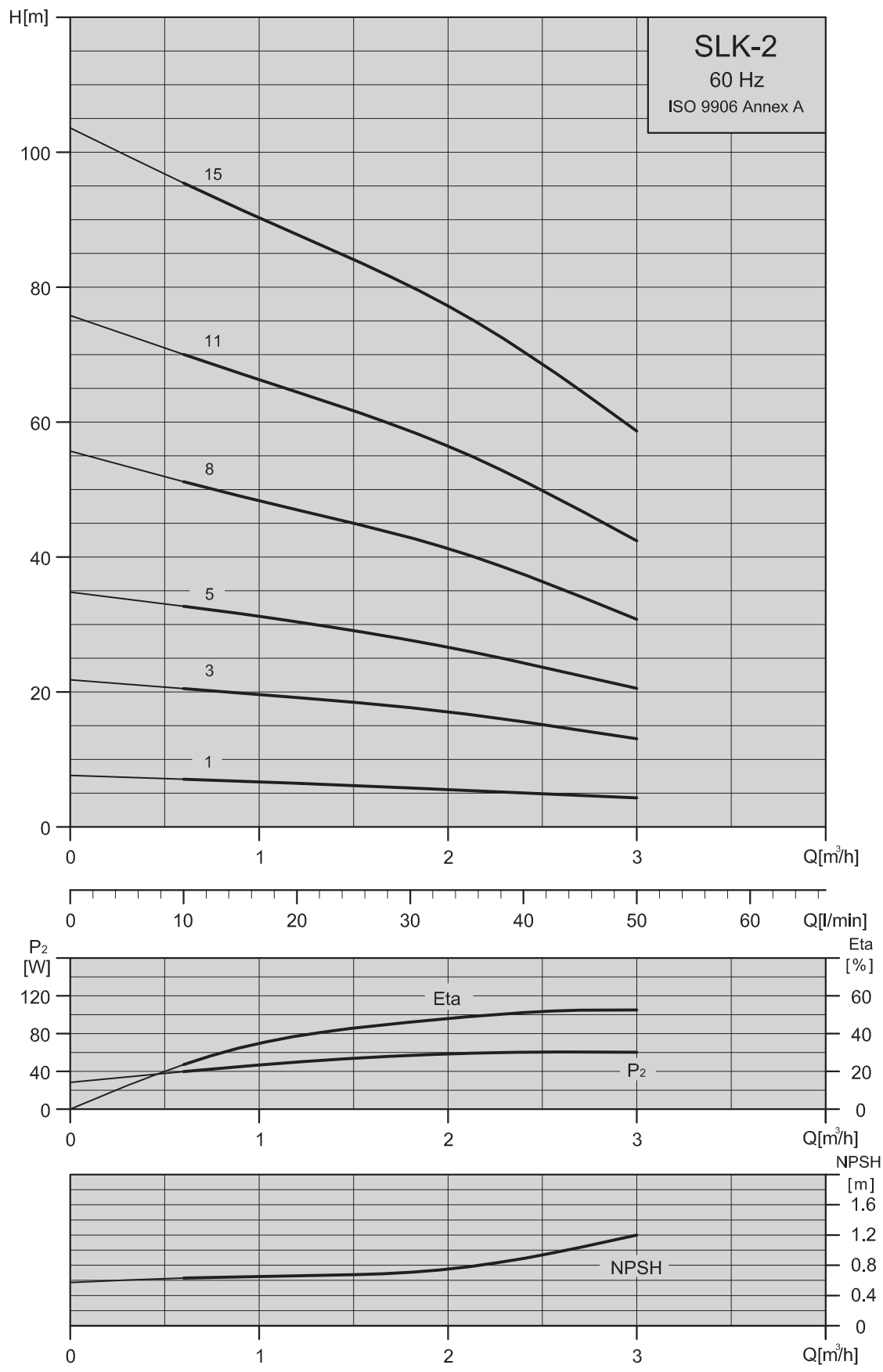
Pump Type	Motor P ₂		In [A]	Dimension (mm)				Net Weight [kg]
	[kW]	HP		A	B	C	D	
SLK-4-19/1	0.37	0.5	1.8-1.9 / 1.0-1.1	791	270	521	105	11.2
SLK-4-19/3	0.37	0.5	1.8-1.9 / 1.0-1.1	791	270	521	105	11.4
SLK-4-19/5	0.55	0.75	2.6-2.7 / 1.5-1.6	791	270	521	105	12.1
SLK-4-19/8	1.1	1.5	5.1-5.2 / 2.9-3.0	834	313	521	120	15.4
SLK-4-19/10	1.1	1.5	5.1-5.2 / 2.9-3.0	834	313	521	120	15.6

Single Frequency

Pump Type	Motor P ₂		In [A]	Dimension (mm)				Net Weight [kg]
	[kW]	HP		A	B	C	D	
SLK-4-11/11	0.75	1	3.4-3.6 / 2.0-2.1	666	313	353	120	13.7
SLK-4-15/11	0.75	1	3.4-3.6 / 2.0-2.1	750	313	437	120	14.1
SLK-4-15/15	1.1	1.5	5.1-5.2 / 2.9-3.0	750	313	437	120	15.6
SLK-4-19/11	0.75	1	3.4-3.6 / 2.0-2.1	834	313	521	120	14.5
SLK-4-19/15	1.1	1.5	5.1-5.2 / 2.9-3.0	834	313	521	120	16
SLK-4-19/19	1.1	1.5	5.1-5.2 / 2.9-3.0	834	313	521	120	16.4

Performance Range SLK 2,4

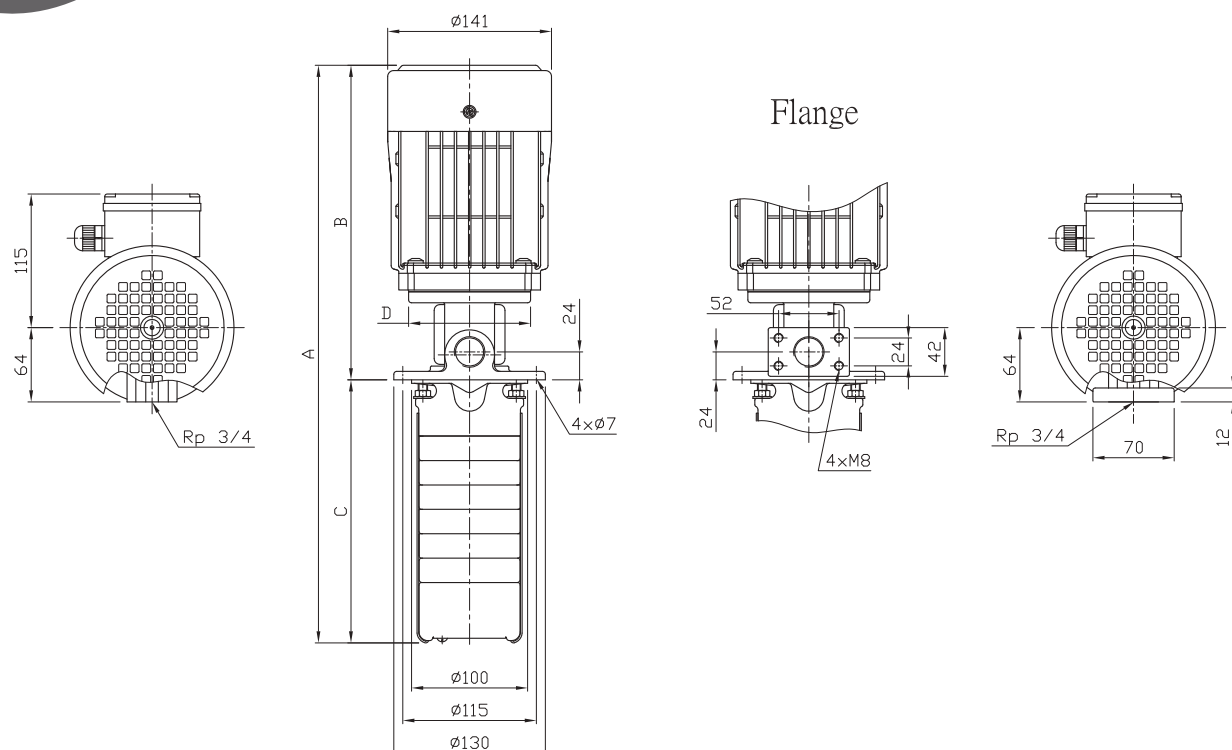




Technical data

Dimensions and weights SLK 2

60Hz



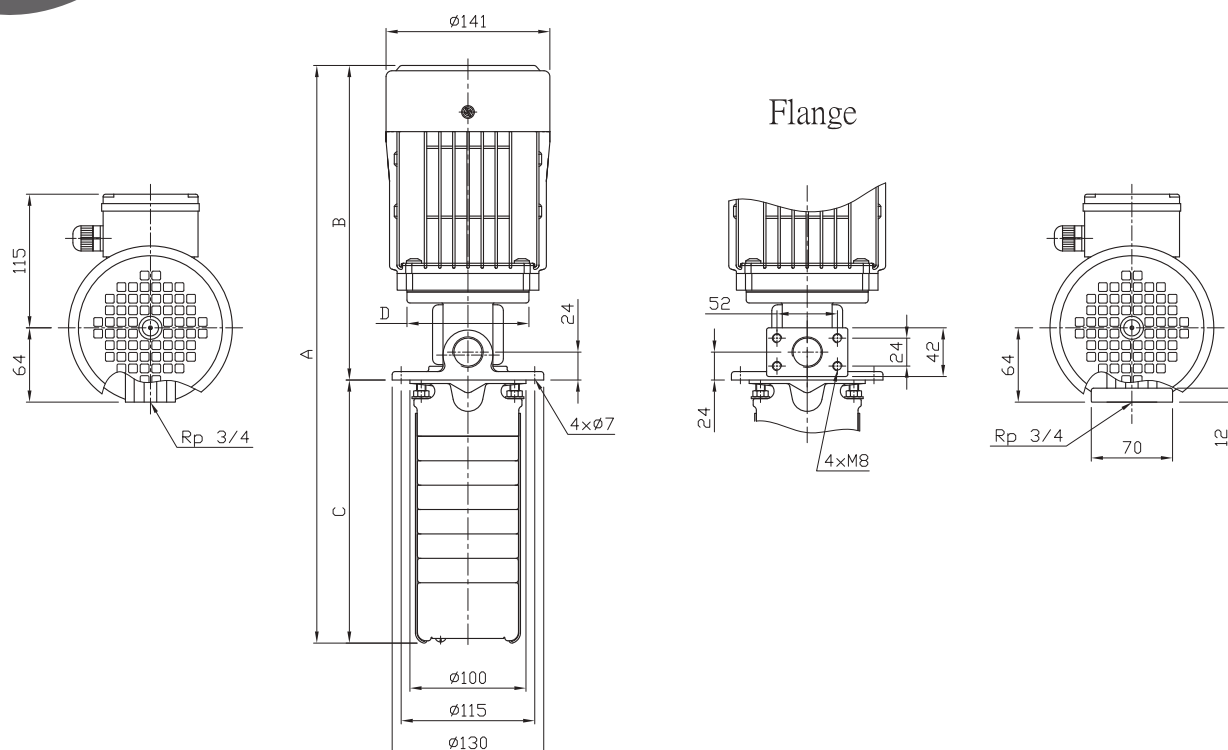
Dual Frequency

Pump Type	Motor P ₂		In [A]	Dimension (mm)				Net Weight [kg]
	[kW]	HP		A	B	C	D	
SLK-2-1/1	0.37	0.5	1.7-1.7 / 1.0-1.0	413	270	143	105	9.4
SLK-2-3/1	0.37	0.5	1.7-1.7 / 1.0-1.0	455	270	185	105	9.6
SLK-2-3/3	0.37	0.5	1.7-1.7 / 1.0-1.0	455	270	185	105	9.8
SLK-2-5/1	0.37	0.5	1.7-1.7 / 1.0-1.0	497	270	227	105	9.9
SLK-2-5/3	0.37	0.5	1.7-1.7 / 1.0-1.0	497	270	227	105	10.1
SLK-2-5/5	0.37	0.5	1.7-1.7 / 1.0-1.0	497	270	227	105	10.2
SLK-2-8/1	0.37	0.5	1.7-1.7 / 1.0-1.0	560	270	290	105	10.2
SLK-2-8/3	0.37	0.5	1.7-1.7 / 1.0-1.0	560	270	290	105	10.4
SLK-2-8/5	0.37	0.5	1.7-1.7 / 1.0-1.0	560	270	290	105	10.6
SLK-2-8/8	0.55	0.75	2.6-2.4 / 1.5-1.4	560	270	290	105	11.3
SLK-2-11/1	0.37	0.5	1.7-1.7 / 1.0-1.0	623	270	353	105	10.5
SLK-2-11/3	0.37	0.5	1.7-1.7 / 1.0-1.0	623	270	353	105	10.7
SLK-2-11/5	0.37	0.5	1.7-1.7 / 1.0-1.0	623	270	353	105	10.8
SLK-2-11/8	0.55	0.75	2.6-2.4 / 1.5-1.4	623	270	353	105	11.6
SLK-2-11/11	0.75	1	3.1-2.9 / 1.8-1.7	666	313	353	120	13.8
SLK-2-15/1	0.37	0.5	1.7-1.7 / 1.0-1.0	707	270	437	105	10.9
SLK-2-15/3	0.37	0.5	1.7-1.7 / 1.0-1.0	707	270	437	105	11.1
SLK-2-15/5	0.37	0.5	1.7-1.7 / 1.0-1.0	707	270	437	105	11.3
SLK-2-15/8	0.55	0.75	2.6-2.4 / 1.5-1.4	707	270	437	105	12.1
SLK-2-15/11	0.75	1	3.1-2.9 / 1.8-1.7	750	313	437	120	14.2
SLK-2-15/15	1.1	1.5	4.8-4.5 / 2.8-2.6	750	313	437	120	15.7

Technical data

Dimensions and weights SLK 2

60Hz

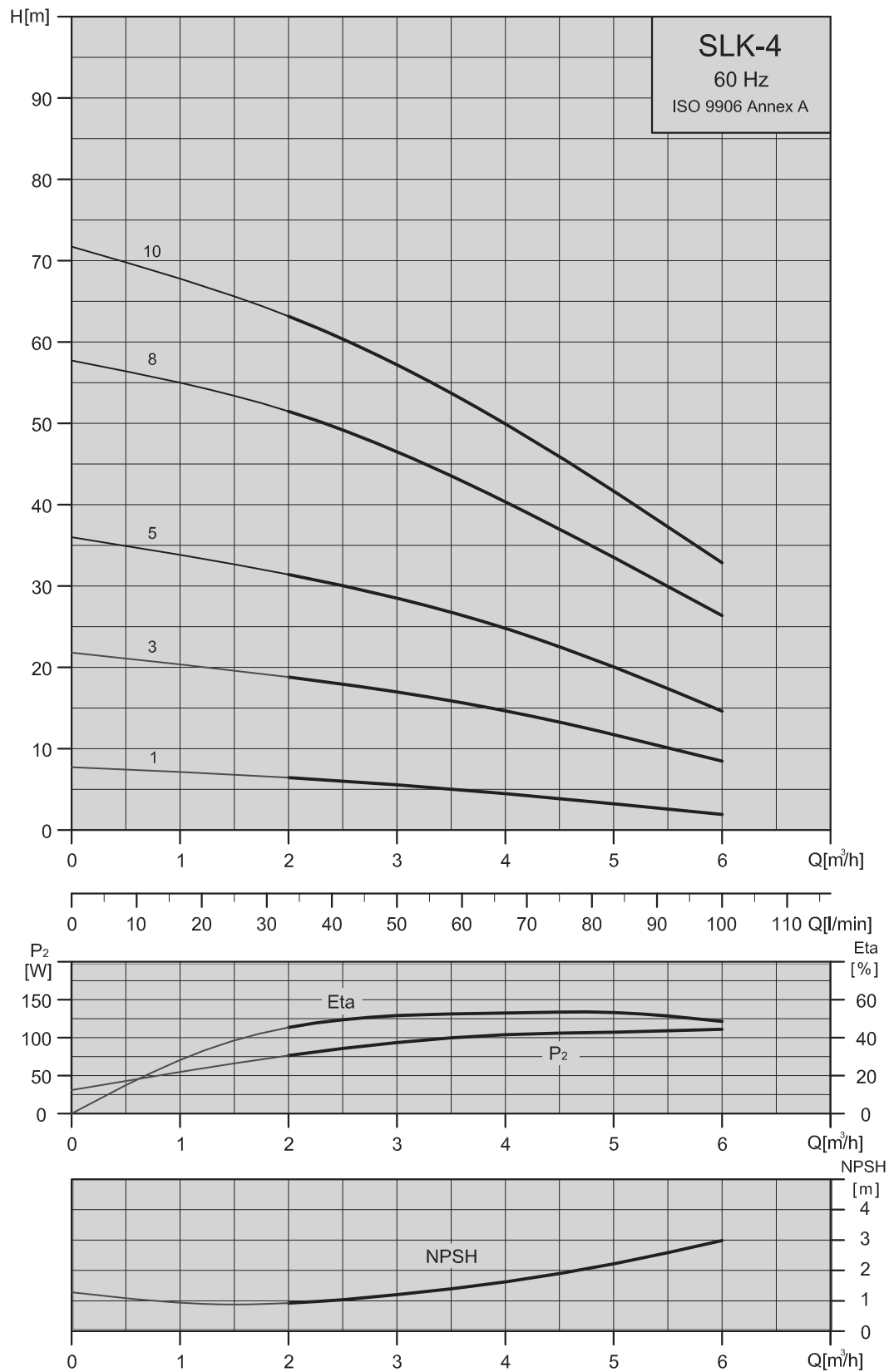


Dual Frequency

Pump Type	Motor P ₂		In [A]	Dimension (mm)				Net Weight [kg]
	[kW]	HP		A	B	C	D	
SLK-2-19/1	0.37	0.5	1.7-1.7 / 1.0-1.0	791	270	521	105	11.2
SLK-2-19/3	0.37	0.5	1.7-1.7 / 1.0-1.0	791	270	521	105	11.3
SLK-2-19/5	0.37	0.5	1.7-1.7 / 1.0-1.0	791	270	521	105	11.5
SLK-2-19/8	0.55	0.75	2.6-2.4 / 1.5-1.4	791	270	521	105	12.3
SLK-2-19/11	0.75	1	3.1-2.9 / 1.8-1.7	834	313	521	120	14.4
SLK-2-19/15	1.1	1.5	4.8-4.5 / 2.8-2.6	834	313	521	120	15.9
SLK-2-23/1	0.37	0.5	1.7-1.7 / 1.0-1.0	875	270	605	105	11.9
SLK-2-23/3	0.37	0.5	1.7-1.7 / 1.0-1.0	875	270	605	105	12.1
SLK-2-23/5	0.37	0.5	1.7-1.7 / 1.0-1.0	875	270	605	105	12.3
SLK-2-23/8	0.55	0.75	2.6-2.4 / 1.5-1.4	875	270	605	105	13.1
SLK-2-23/11	0.75	1	3.1-2.9 / 1.8-1.7	918	313	605	120	15.2
SLK-2-23/15	1.1	1.5	4.8-4.5 / 2.8-2.6	918	313	605	120	16.7

Technical data
Performance curves SLK 4

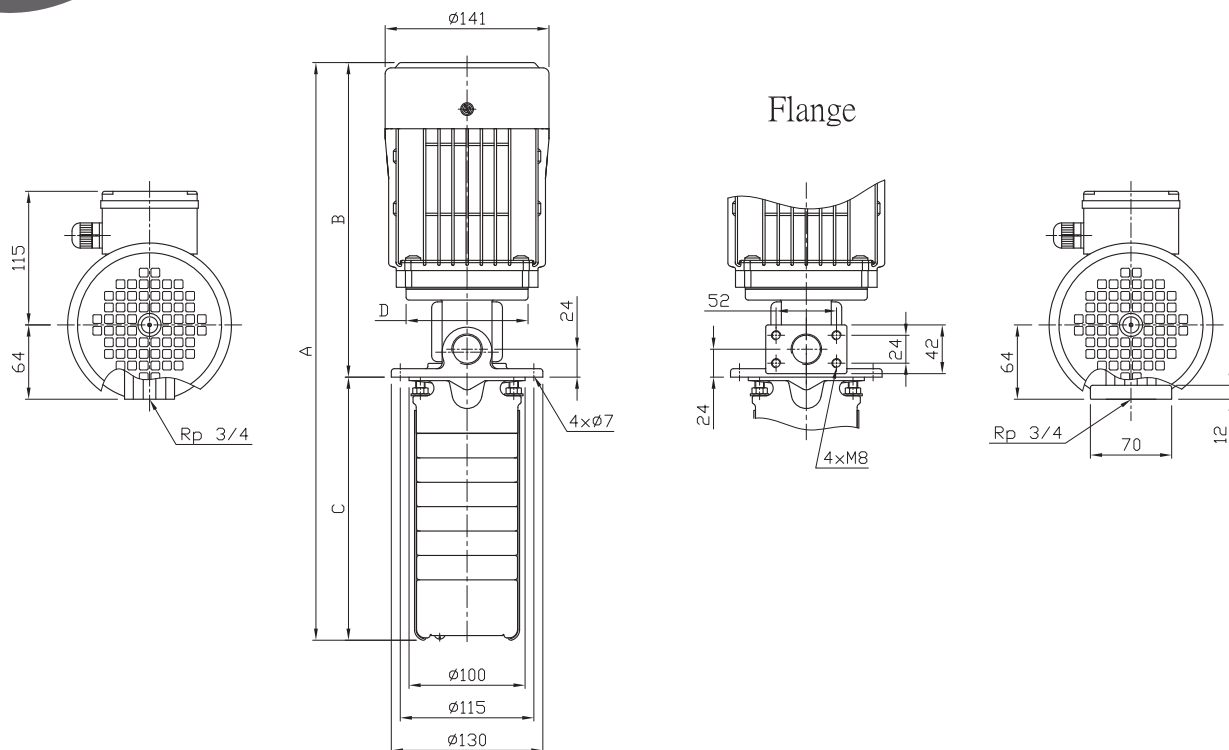
60Hz



Technical data

Dimensions and weights SLK 4

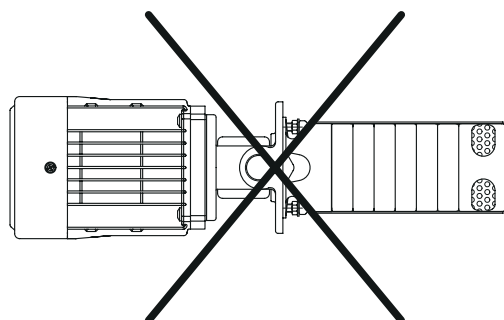
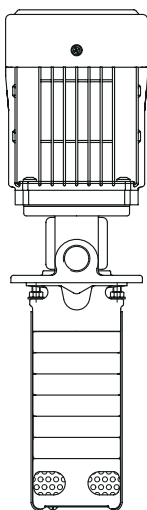
60Hz



Dual Frequency

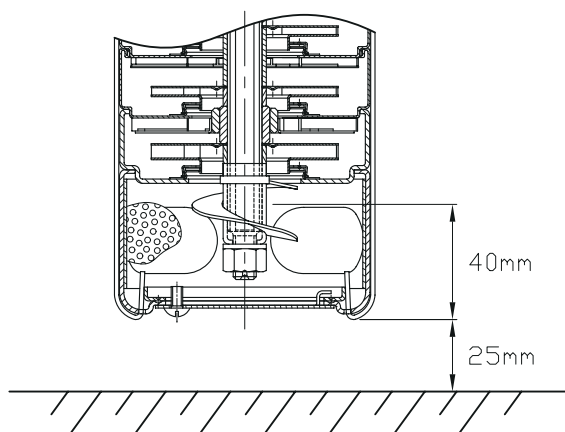
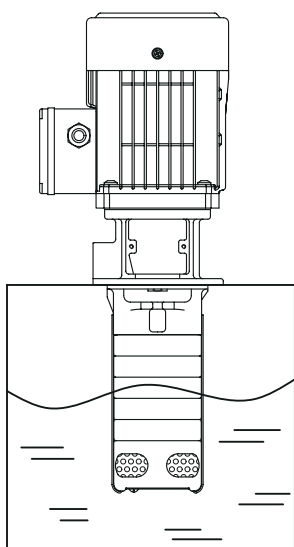
Pump Type	Motor P ₂		I _n [A]	Dimension (mm)				Net Weight [kg]
	[kW]	HP		A	B	C	D	
SLK-4-1/1	0.37	0.5	1.7-1.7 / 1.0-1.0	413	270	143	105	9.4
SLK-4-3/1	0.37	0.5	1.7-1.7 / 1.0-1.0	455	270	185	105	9.6
SLK-4-3/3	0.37	0.5	1.7-1.7 / 1.0-1.0	455	270	185	105	9.8
SLK-4-5/1	0.37	0.5	1.7-1.7 / 1.0-1.0	497	270	227	105	9.9
SLK-4-5/3	0.37	0.5	1.7-1.7 / 1.0-1.0	497	270	227	105	10
SLK-4-5/5	0.55	0.75	2.6-2.4 / 1.5-1.4	497	270	227	105	10.7
SLK-4-8/1	0.37	0.5	1.7-1.7 / 1.0-1.0	560	270	290	105	10.1
SLK-4-8/3	0.37	0.5	1.7-1.7 / 1.0-1.0	560	270	290	105	10.3
SLK-4-8/5	0.55	0.75	2.6-2.4 / 1.5-1.4	560	270	290	105	10.9
SLK-4-8/8	1.1	1.5	4.8-4.5 / 2.8-2.6	603	313	290	120	14.2
SLK-4-11/1	0.37	0.5	1.7-1.7 / 1.0-1.0	623	270	353	105	10.4
SLK-4-11/3	0.37	0.5	1.7-1.7 / 1.0-1.0	623	270	353	105	10.6
SLK-4-11/5	0.55	0.75	2.6-2.4 / 1.5-1.4	623	270	353	105	11.3
SLK-4-11/8	1.1	1.5	4.8-4.5 / 2.8-2.6	666	313	353	120	14.5
SLK-4-11/10	1.1	1.5	4.8-4.5 / 2.8-2.6	666	313	353	120	14.7
SLK-4-15/1	0.37	0.5	1.7-1.7 / 1.0-1.0	707	270	437	105	10.9
SLK-4-15/3	0.37	0.5	1.7-1.7 / 1.0-1.0	707	270	437	105	11
SLK-4-15/5	0.55	0.75	2.6-2.4 / 1.5-1.4	707	270	437	105	11.7
SLK-4-15/8	1.1	1.5	4.8-4.5 / 2.8-2.6	750	313	437	120	15
SLK-4-15/10	1.1	1.5	4.8-4.5 / 2.8-2.6	750	313	437	120	15.2
SLK-4-19/1	0.37	0.5	1.7-1.7 / 1.0-1.0	791	270	521	105	11.2
SLK-4-19/3	0.37	0.5	1.7-1.7 / 1.0-1.0	791	270	521	105	11.4
SLK-4-19/5	0.55	0.75	2.6-2.4 / 1.5-1.4	791	270	521	105	12.1
SLK-4-19/8	1.1	1.5	4.8-4.5 / 2.8-2.6	834	313	521	120	15.4
SLK-4-19/10	1.1	1.5	4.8-4.5 / 2.8-2.6	834	313	521	120	15.6

Installation



Note

- > When you install the SLK 2,4 series pumps, you must follow the instruction as below.
- > The distance between the liquid level and the pump bottom (Minimum) : 40 (mm)
- > The distance between the pump and the tank bottom (Minimum) : 25mm





No. 3-8, Sanchial Tsun, Lutsao Hsiang,
Chiai Hsien, Taiwan
Tel :+886(0)53750488
Fax:+886(0)53755658
E-Mail:stairs@stairs.com.tw

www.stairs.com.tw